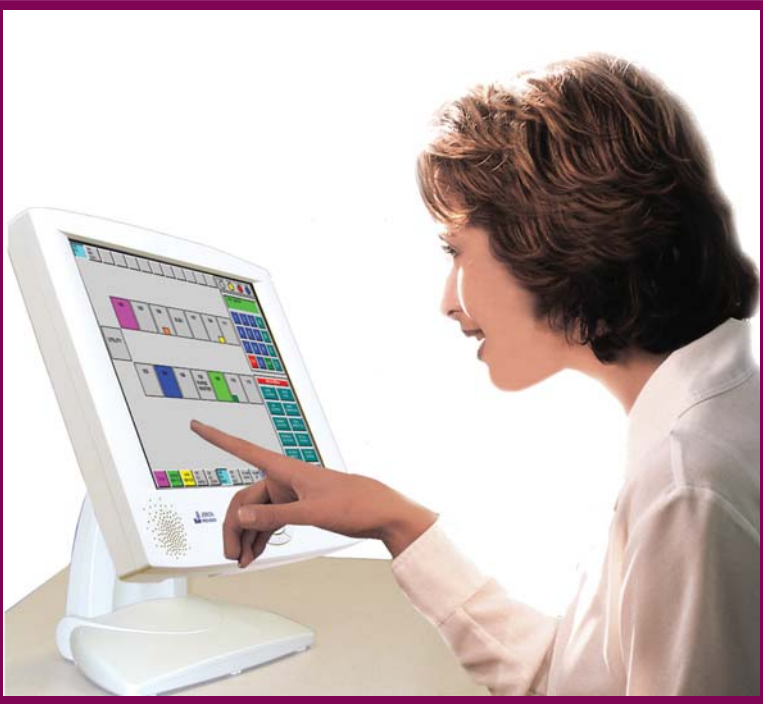


# PROVIDER TOUCHSCREEN and TOUCHSCREEN IP



## **Instant Information**

Immediately identify the location of pending patient calls, service requests, staff and equipment locations on the larger graphic floor plan map with full color icons.

## **Simplified Staff Assignments**

With the touch of a finger, change assignments for staff radio pagers and wireless PCS phones.

## **Patient Whiteboard**

Electronic Whiteboard provides easy access to real time patient and staff details on one convenient screen when integrated with HL-7.

## **Virus Immunity**

Embedded technology eliminates the need for a PC.

## **The IP Difference - Touchscreen IP on the LAN**

Provider Touchscreen IP is a local area network based nurse master console.

## **Realize Cost Savings**

Utilizing Touchscreen IP in a networked system environment significantly reduces equipment requirements.

## **Reliability is Assured**

Local area network interruption has no effect on nurse call system operation because nurse call is optically isolated from LAN to maintain Life Safety reliability.

## **Maintained Integrity**

All pending patient calls are simultaneously displayed on both the Satellite Master Audio Console and the Touchscreen IP Master.

**Please contact your regional sales manager for more information or call us at (800) 621-1903.**

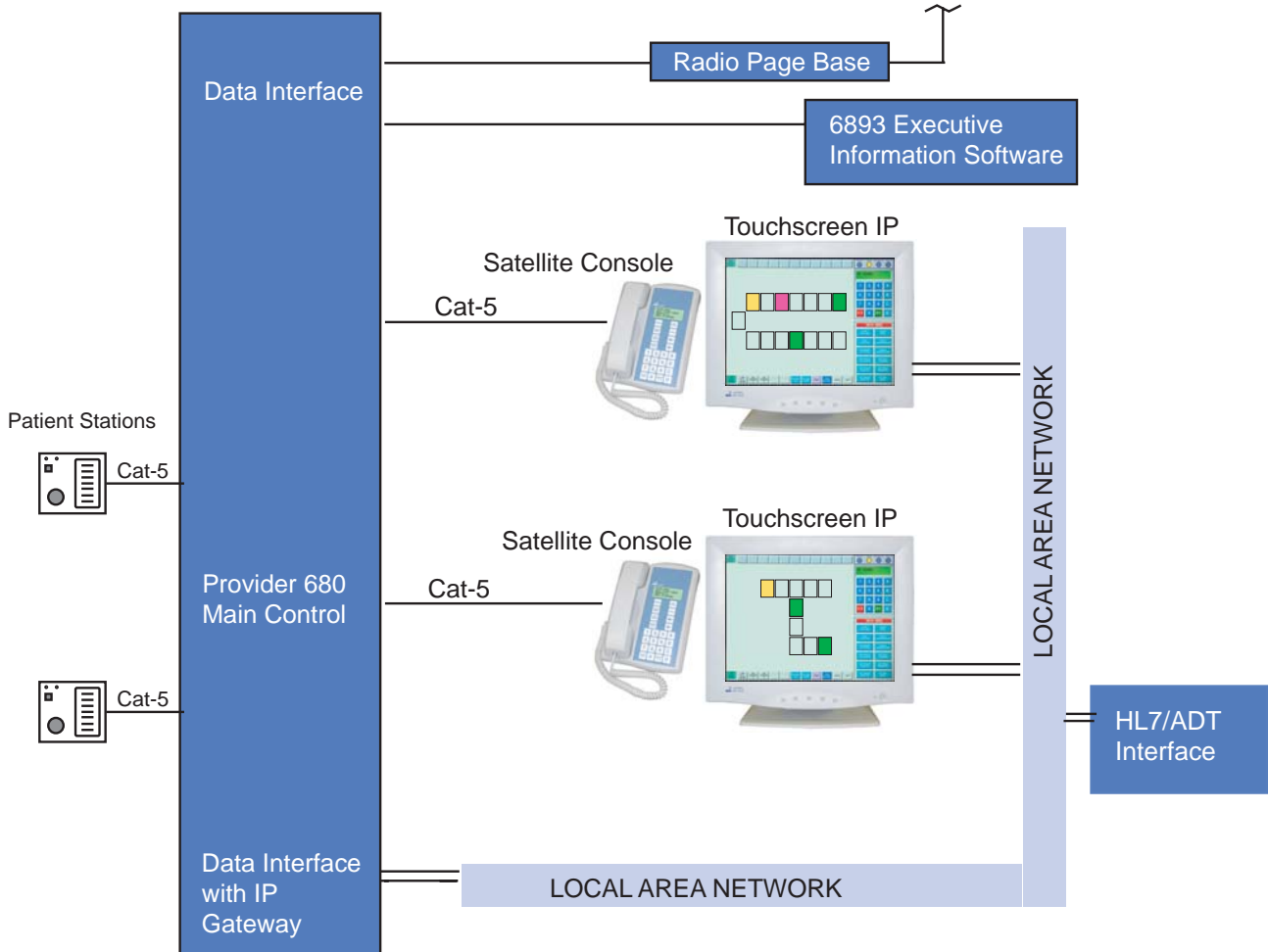


1743-55 West Rosehill Drive ■ Chicago, IL 60660  
Ph.: (800) 621-1903 ■ Fax: (773) 275-0283  
Email: [sales@jeron.com](mailto:sales@jeron.com) ■ Web: [www.jeron.com](http://www.jeron.com)

# PROVIDER TOUCHSCREEN and TOUCHSCREEN IP

## Provider Touchscreen IP

Provider Touchscreen IP for local area network operation features color graphic map room display without the need for a PC.



## A Comparison of Standard Touchscreen to Touchscreen IP

